

*Osceola County*

4-H Family News

August 2020

Dear 4-H members, leaders, parents, and supporters,

Summer is coming to a close. Thank you to all youth that participated at the Marion Virtual Fair and the Middle of the Mitt Virtual 4-H Showcase. Good luck to all of our 4-H members participating at the Northern District Virtual Fair.

September 1st starts a new 4-H year and since last year we had many new members join and participate in 4-H. Please spread the word about 4-H to your friends, family, and anyone you may know so we can keep growing. We still have youth that have not paid their 2019-2020 participation fee. Our office has been in contact with clubs and will continue to do so until all fees are collected. Remember our year starts September 1st. When this pandemic hit we were 6 months into our year and many of you attend 4-H meetings like OLC, Small Animal, and club meetings.

As we continue to move forward during the pandemic, please take a look the letter to 4-H families from Dr. Dwyer found on page 4. Osceola County 4-H is only doing virtual programs and meetings with no face to face until further notice. For clubs that would like to meet virtually please contact me, and I will help you get everything set up. Also in that letter you will find that there will be no participation fee for the upcoming year.

Sincerely,
Jacob Stieg
Osceola County 4-H Coordinator

Club Leaders!!

Year-end Financial Reports and Annual Civil Rights Form is due to the 4-H Office by September 30th. If you need copies of the forms they are available at the 4-H office, on our website and in this newsletter. Along with the forms, we need a copy of the minutes from one meeting and the club's August 2020 bank statement (if you have an account). If you have any questions, please call the 4-H Office. Here is the link to forms on our website: https://www.canr.msu.edu/osceola/osceola_county_4_h/general-info

Contact Us

Jacob Stieg
4-H Program Coordinator

301 W Upton Ave
Reed City MI 49677

Phone
231-832-6139

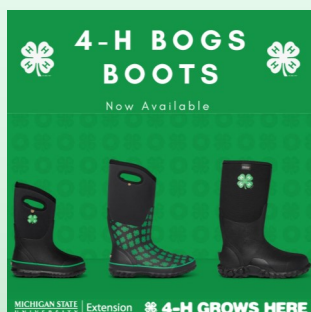
Email
stieg@msu.edu

Web Site
<https://www.canr.msu.edu/Osceola>

Like us on Facebook -
"Osceola County Michigan
4-H"



4-H Bog Boots Now Available!



Love Bogs boots? You can now wear them and support 4-H! Not only do the boots have fun 4-H clover designs, but Bogs will donate \$5 for each pair sold to National 4-H Council to support 4-H outdoor education programs.

Women and children boots are currently available for purchase in stores and online at BOGSfootwear.com. Men's boots will be available in early August.

4-H Events and Workshops

August 25: 4-H Teen Tuesday - All About Chocolate

Zoom Webinar

Current 4-H members ages 13-19 can connect each Tuesday with their peers across the state while learning about a wide array of 4-H project areas.

<https://www.canr.msu.edu/events/august-25-4-h-teen-tuesday-100-cocoa-all-about-chocolate>

August 25-27: Turn Your Passions Into Profits Entrepreneurship Camp

Zoom Webinar

Find the entrepreneur in you with this free virtual camp. Interactive activities introduce the 4-H entrepreneurship project while you develop your business ideas and learn how to market.

<https://www.canr.msu.edu/events/turn-your-passions-into-profits-entrepreneurship-camp>

August 27: 4-H at 4 on Thursdays - Crafts Around the World

Zoom Webinar

Youth will explore simple cultural traditional crafts from around the world. This session will feature yarn art from North America.

<https://www.canr.msu.edu/events/august-27-crafts-around-the-world-north-america-yarn-art>

For the most up-to-date events listing, go to <http://4h.msue.msu.edu/events>.



Zoom sessions will start **August 18th** and run every Tuesday until **September 15th**, with a new topic each week. We will meet via zoom from 1pm – 2pm. This program is open to both 4-H and non 4-H youth, statewide, in grades k-12. **Register here:** <https://www.canr.msu.edu/events/thinking-project-fish> by **August 17th** to make sure you don't miss out. Zoom link and supply list will be emailed upon registration.



Join the Michigan State Fair 4-H & Youth Virtual Showcase!

MSU Extension is excited to partner with the [Michigan State Fair](#) to launch an exciting new program for Michigan youth: the Michigan State Fair 4-H & Youth Virtual Showcase. This statewide showcase will provide a virtual platform for Michigan 4-H'ers and other youth to exhibit their work in all project areas and apply for \$10,000 in scholarships. Michigan youth ages 5-19 are encouraged to participate.

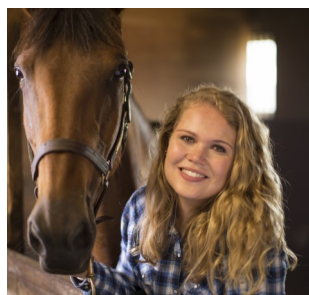
Registration will be opening soon! While classes are still being finalized, MSU Extension and the Michigan State Fair hope to celebrate all the projects and programs in which youth have developed skill and mastery. This includes livestock and companion animal classes such as showmanship, breeding and market classes, as well as still exhibits, educational projects and more.

Once open, registration will be available until August 23. There is no cost to participate and youth may engage in as many classes as they wish. Project evaluation will begin on August 24 with winners announced during the Michigan State Fair, September 3-7. Begin working on your [project photos and videos](#) now to ensure you're ready to submit when registration opens!

In addition to the opportunity to showcase their skills, recognize their accomplishments and receive constructive feedback for growth and development, participants in the Michigan State Fair 4-H & Youth Virtual Showcase will also have the opportunity to apply for \$10,000 in scholarships. Applications and criteria are still being developed - more details about the scholarships and Michigan State Fair 4-H & Youth Virtual Showcase will be shared online at extension.msu.edu/MSF4HShowcase as details become available. We hope you will consider participating in this exciting new opportunity!

Free Summer Horse Care Online Course

Horse owners around the country look forward to summertime equestrian activities to get them through the winter months. Due to the 2020 COVID-19 pandemic, many shows, trail rides and clubs have cancelled their live events. In a heartfelt effort to support horse enthusiasts, the MSU Extension Equine Team has put together a Summer Horse Care online course series and is offering it free of charge during 2020. Participants can earn a certificate for each of the following units:



- Unit 1: Routine Health Care – covers vaccinations, deworming, and dental care.
- Unit 2: Pasture Management – covers pasture planning, renovation, forage species, grazing management, and toxic plants.
- Unit 3: Manure Management – covers water quality, manure management options, and composting.
- Unit 4: Biosecurity – biosecurity protocol for equine and people, wildlife and insect control, and COVID-19 resources.

To learn more, go to www.myhorseuniversity.com/summer-horse-care-101.

Michigan Forestry Scavenger Hunt



From August 7-12, families with youth ages 5-19 are welcome to join in the Michigan Forestry Scavenger Hunt! This self-paced experience will have families taking part in forestry-themed missions and sharing their progress with other teams in this online GooseChase scavenger hunt.

Participate from your backyard, campground, or wherever your family will be during this time! All you need is a smart phone or tablet with a camera.

The top placing U.P. and Lower Peninsula teams will be awarded a prize package that includes a camp hammock. In addition, other prize packages will also be awarded to teams throughout the scavenger hunt.

For more information and to register, visit www.canr.msu.edu/events/michigan-forestry-savenger-hunt.

Everyone should have received this email from campus regarding 4-H and upcoming events, but in case you didn't see it. If you have any questions, please let us know.

Hello,

Many things have changed in the last six months, so much so that we have lost track of what the word "normal" means. We continue to be impressed with the members of the 4-H community who, despite their disappointments, have embraced "the new normal" and continue to make the best better. Thank you for all you do.

Earlier this year we pivoted all of our programming to online formats to comply with the original Stay Safe, Stay Home order ([EO2020-42](#)). Though this has been a difficult time for communities, families and our own faculty and staff members, we are proud of the work our team has done to ensure that you continue to have access to high-quality educational opportunities throughout Michigan.

After much discussion and study, we have decided to continue to keep all 4-H programming, meetings and events virtual until further notice. This applies to all children and youth activities involving ages birth to 19. We recognize that this is a hardship on those who are eager to engage in in-person activities with their 4-H community. However, we must do everything we can to keep youth and adults safe and healthy. As such, please continue to hold 4-H club meetings and other local events virtually. MSU Extension staff members, including 4-H program coordinators, cannot support in-person activities. Further, funds raised in the name of 4-H cannot be used to support in-person events until further notice.

Although our delivery modes have changed, we are still hard at work for you. Because of our statewide reach, you have access to a number of MSU Extension events. Visit our [MSU Extension Remote Learning and Resources](#) to learn more.

Finally, we recognize that the COVID-19 pandemic and other associated factors have put a financial strain on many families. Therefore, we have opted to waive the Michigan 4-H participation fee of \$20 per person or \$60 per family for the 2020-21 4-H program year which begins September 1, 2020. Some events may continue to have registration fees. You will continue to register through 4-H Online as usual, but no participation fees will be collected or expected next year.

We assure you that this does not diminish our commitment to the 4-H community. We will continue to offer high-quality, virtual programming and experiences, and look forward to the day when we can resume in-person programming.

If you are interested in supporting 4-H in lieu of paying participation fees, please contact your 4-H program coordinator for opportunities.

May we all continue to make the best better.

Sincerely,

Jeff Dwyer

Director, MSU Extension

Jake DeDecker

State Program Leader, Michigan 4-H

Please make sure your 4-H Enrollment fee/s are paid for 2019-2020 even though our 4-H Year was cut short. We can take a check, money order, cash or debit/credit card (over the phone is available).

MANAGING MONEY WISELY | FINANCIAL MANUAL FOR 4-H TREASURERS

Annual Financial Summary Report

Directions: Complete each section of this report whether or not the group had a treasury, collected or spent funds, accepted donations or had property within the report period. **Groups without a treasury, and whose participation fees did not pass through the group,** must still complete the form (with zero [0] balances) and submit it by the county's designated deadline.

Part 1. Group Information

For the period September 1, 20 ____ to August 31, 20 ____ County _____

Group name _____ EIN _____

Financial account No ☐ Yes ☐ Type Checking ☐ Savings ☐ CD/Money Market ☐ Other ☐

Financial Institution Name _____ Account # _____

Signatories _____, _____, _____

Part 2. Group Income and Expenses

Adjusted treasury balance as of September 1 of last year	A		\$
Taxable sales income (list each separately; attach additional sheet if necessary)			
1. _____			
2. _____			
3. Total from additional sheet			
Taxable sales subtotal (add items 1-3 above)		\$	
Nontaxable income (list each separately; attach additional sheet if necessary)			
1. 4-H participation fees collected			
2. Total monetary donations received			
3. _____			
4. _____			
5. Total from additional sheet			
Nontaxable income subtotal (add items 1-5 above)		\$	
Total income for the period (add B and C)	D	plus	\$
Expenses (list each separately; attach additional sheet if necessary)			
1. 4-H participation fees paid to the MSU Extension office			
2. _____			
3. _____			
4. _____			
5. _____			
6. Total from additional sheet			
Total expenses for the period (add lines 1-6 above)	E	minus	\$
Account balance at end of the period (add A and D; then subtract E)	F	equals	\$
Add checks that have not shown up on statement	G	plus	
Subtract deposits that have not shown on statement	H	minus	
Adjusted balance (should agree with account statement)	I	equals	\$

Please respond to the following:

- The account statement was reconciled each month. Yes ☐ No ☐
- There is written documentation that all expenses were approved through an approved budget or by a vote of the full membership. Yes ☐ No ☐
- What was the group's total account balance as of June 30 of this period? \$ _____

MANAGING MONEY WISELY | FINANCIAL MANUAL FOR 4-H TREASURERS

Annual Financial Summary Report, continued.

Part 3. State Sales Tax

Complete this section if the group has taxable sales (Part 2, line B).

Total taxable sales (Part 2, line B): \$ _____

Divide the amount by 17.67 = \$ _____ This is the amount of sales tax the 4-H group owes.

Make check or money order payable to "Michigan State University" and submit the check with this Annual Financial Summary Report to the MSU Extension office by the county's deadline.

Part 4. Verification of No Account at a Financial Institution

A signature in this box verifies that this 4-H group did **not have an account at a financial institution during this report period**. It further verifies that the group had less than \$100 (not including 4-H participation fees) in its treasury for more than 30 days.

If the 4-H group opens an account at a financial institution in the future, the group must notify the county MSU Extension 4-H staff within 10 business days.

Part 5. Inventory of 4-H Group Property

"4-H group property" is defined as all items purchased with 4-H group funds as well as all items donated to the 4-H group.

If the 4-H group has no property, verify by signing here: _____

If the 4-H group has property, list below and on additional sheets if necessary, all existing group property. List consumable items (such as food, tape or paper plates) only if the amount is so significant that the items will last more than a year.

If the group disbands, all nonconsumable (not eaten or worn) property must be returned to the MSU Extension office within 10 business days of the group's final date of operation.

Year Purchased or Received	Quantity	Item Description	Value When New	Storage Location	If Discarded Last Year, Explain Why

Part 6. Signatures, Review and Approval

Signature of person who prepared this report	Phone	Date
Signature of person who reviewed and approved this report	Phone	Date
Signature of 4-H staff who approved this report	Date	

4-H Youth Program compliance statement

Michigan State University Extension

_____ County 4-H Youth Program

Civil Rights Compliance Statement

Name of Group (Club):

Primary Location:

I understand that the use of the 4-H name and emblem is granted on the basis that membership in the group named above is open to all without regard to race, color, national origin, gender, gender identity, religion, age, height, weight, disability, political beliefs, sexual orientation, marital status, family status or veteran status.

Signature of Club Coordinator

Date

MSU is an affirmative-action, equal-opportunity employer, committed to achieving excellence through a diverse workforce and inclusive culture that encourages all people to reach their full potential. Michigan State University Extension programs and materials are open to all without regard to race, color, national origin, gender, gender identity, religion, age, height, weight, disability, political beliefs, sexual orientation, marital status, family status or veteran status. Issued in furtherance of MSU Extension work, acts of May 8 and June 30, 1914, in cooperation with the U.S. Department of Agriculture. Thomas G. Coon, Director, MSU Extension, East Lansing, MI 48824. This information is for educational purposes only. Reference to commercial products or trade names does not imply endorsement by MSU Extension or bias against those not mentioned.

August 2020

8

Sun	Mon	Tue	Wed	Thu	Fri	Sat
						1
2	3	4	5	6	7 4-H Office Closed	8
9	10	11	12	13	14 4-H Office Closed	15
16	17	18	19	20	21 4-H Office Closed	22
23	24	25	26	27	28 4-H Office Closed	29
30	31					

As the courthouse opens to the public please remember that you need to enter and exit at the Upton Ave entrance and go through the security check. Please be patient as you may be screened with health questions due to COVID-19 exposure. Masks will be required when entering.

The 4-H Office hours may vary so please call ahead to make sure someone is there to assist you. Normally Monday thru Thursday 8:30am to 5pm, closed Fridays.

Thank you for your understand and patience as we go through this together.